



The Lawrence Family of Lodi, and Lawrence Park

Compiled by Alane K. Dashner, Explore Lodi

Summary:

Ezekiel Lawrence (the father)

Came to California in 1850, married Mary Hutchins (Hutchins Street Square). The Hutchins and Lawrence families were the real estate magnates of early Lodi. The Lawrences personally lived on the north side of E Lockeford St between Main and Stockton Sts.

In 1869 Ezekiel was one of the four farmers who convinced the railroad to run their new tracks here instead of through Woodbridge – a true Founder of Lodi.

Farmed almonds and grapes – was an early planter of Tokay grapes. In the 1870 census his household was worth \$8000.

Was a founding member of the Lodi Odd Fellows and Masons; as a Granger helped found the 1876 Granger's Store and Odd Fellows Hall.

In 1880 when wheat was the Central Valley's main crop Ezekiel partnered with George Locke of Lockeford to build a warehouse that held 4500 tons of grain. It's now called the Ice House.

In 1882 he backed the San Joaquin and Sierra Nevada narrow-gauge rail that linked Brack's Landing (today on Woodbridge Road west of I-5) to Valley Springs.

In 1886 the brothers-in-law Ezekiel Lawrence and John Hutchins bought a 75 horse-power “Atlas” steam-powered pump for a grand irrigation project that brought reliable water from the Mokelumne River through ditches to many parts of early Lodi, skyrocketing homestead values.

Ezekiel was a strong proponent for education and many-decade school trustee: Lodi’s first school was on the Lawrence property north of Lockeford Street and Ezekiel pushed and partially paid for the 1883 Salem School. That school bell is at Lodi Lake today.

George Lawrence (the son)

Became a lawyer and Justice of the Peace before he turned to the family business of grape and almond farming.

Most important: George worked toward Lodi’s 1906 incorporation, was elected a founding Trustee (Councilmember) for the new City of Lodi, and was repeatedly re-elected and chosen Mayor for Lodi’s first 8 years. In that capacity he led residents through incredible growth:

- Organized and expanded the existing water and electric utilities so that all Lodians would have clean water, power, and sewer.
- Launched our police and fire departments.
- Navigated through new business license fees and regulations, addressed many residents’ concerns regarding alcohol and dancing.
- Was also head of Lodi’s Board of Trade and starting in 1907 helped shape the marketing strategy of “Lodi = Grapes.”
- Continued his family’s advocacy in education: in 1911 was chair of the committee petitioning for a Union high school. George pushed local voters to back the school bond that built Lodi Union High School.
- Was a friend to the local Japanese Association when elsewhere in California anti-Asian sentiment ran high.
- In 1913 travelled to Washington DC to successfully lobby against a proposed new tax on fortified wine.

After leaving public service George led California agriculture at the state level: was VP of the CA Almond Growers association and, with the anti-alcohol temperance movement cranking up, became President of the CA Grape Protection Association.

Lawrence Park

In 1911 George Lawrence allowed local baseball enthusiasts to build a diamond on the Lawrence property north of Lockeford Street. The Friedberger family paid for a grandstand. This first baseball team was called the Outlaws.

In 1913 George thought that all athletic activities would move to the new Lodi High School, so he planted his baseball diamond in potatoes.

In 1916 a new diamond was laid on Lawrence property. The new facility even had parking places for automobiles. The team was now called the Broncos.

In 1926 George Lawrence deeded 8.5 acres to the City of Lodi to be used as a park on the conditions that East Lockeford and part of Washington St would be paved and improvements made to the park. Mr. Lawrence also insisted upon a reversion clause providing that if the park is not always used for park purposes, it shall revert back to the Lawrence heirs.

In April 1926 the new ballfield at Lawrence Park was described as being surrounded by Tokay grapevines and a new fence. The backstop [behind home plate] had been built and bleachers were ready for 300 fans. There was parking for 160 machines [automobiles].

Family Timeline:

- 1826 Ezekiel Lawrence born Hastings, Ontario, Canada
- 1833 Mary Hutchins is born Ontario, Canada
- 1850 Ezekiel arrives in Sacramento, begins working in the mines
- 1857 Ezekiel and Mary marry in Placerville
- 1857 Ezekiel moves to Lodi
- 1858 Ezekiel's and Mary's first son, William, is born
- 1861 Ezekiel's and Mary's second son, George, is born
- 1868 Ezekiel's and Mary's daughter, Nettie, is born
- 1879 Ezekiel builds two-story home 115 E Lockeford
- 1889 Ezekiel's and Mary's first son, William, dies
- 1899 Ezekiel Lawrence dies
- 1900 George marries Emilia Jones of San Francisco
- 1909 Mary Hutchins Lawrence dies
- 1933 Ezekiel's and Mary's second son, George, dies

History of San Joaquin County California with Biographical Sketches, by George H. Tinkham 1923 [*always take Tinkham with a grain of salt as the editors generally did not fact-check the families' submissions*]:

- The founding of Lodi “After the survey had been made through Lodi, A. T. Ayers, John U. Magley, R. L. Wardrobe and E. Lawrence petitioned the railroad company to locate a station on their land”
<https://archive.org/details/historyofsanjoaq00tink/page/304/mode/2up?q=lawrence>
- Ezekiel Lawrence is a founder of the Lodi Odd Fellows
<https://archive.org/details/historyofsanjoaq00tink/page/306/mode/2up?q=lawrence>
- Lodi’s first schoolhouse was built on Ezekiel Lawrence’s property
<https://archive.org/details/historyofsanjoaq00tink/page/308/mode/2up?q=lawrence>
- George Lawrence is chair of a committee petitioning for a high school in Lodi
<https://archive.org/details/historyofsanjoaq00tink/page/308/mode/2up?q=lawrence>
- George Lawrence is chair of Lodi’s Board of Trade, presents keys to the city to Queen Zinfandel at the 1907 Tokay Grape Carnival
<https://archive.org/details/historyofsanjoaq00tink/page/314/mode/2up?q=lawrence>
- George Lawrence describes early music in Lodi
<https://archive.org/details/historyofsanjoaq00tink/page/314/mode/2up?q=lawrence>
- Main entry for George Lawrence
<https://archive.org/details/historyofsanjoaq00tink/page/1194/mode/2up?q=lawrence>

Lodi Historical Society newsletters:

- *San Joaquin & Sierra Nevada Railroad*, Vol 5 No 4 Fall 1994
<https://californiarevealed.org/do/a4886dbb-2368-4120-babd-a2ed4b898268>
- *Salem District & School* Vol 6 No 3 Fall 1995
<https://californiarevealed.org/do/7009541a-b31c-445f-a73b-f7853ede920c>
- *The Lawrence Family*, Vol 16 No 1 Spring 2005
<https://californiarevealed.org/do/27813c23-4d16-4404-af4a-a7b19519e9ed>
- *Mokelumne*, Vol 17 No 1, Winter 2006 <https://californiarevealed.org/do/08440006-2530-41d0-adce-f65afffa6bea>
- *Lodi Grammar Schools*, Vol 20, No 1 Winter 2009
<https://californiarevealed.org/do/675b65d5-2a46-4767-a7ab-5b56d01cd353>

Find a Grave:

- Ezekiel Lawrence (San Joaquin Catholic Cemetery)
<https://www.findagrave.com/memorial/33652571/ezekiel-lawrence>
- Mary Hutchins Lawrence (San Joaquin Catholic Cemetery)
<https://www.findagrave.com/memorial/33652606/mary-lawrence> obit says E. Lawrence was a brilliant lawyer

- William H. Lawrence <https://www.findagrave.com/memorial/33652449/william-h-lawrence>
- George Ezekiel Lawrence https://www.findagrave.com/memorial/33652502/george_ezekiel-lawrence
- Nettie Lawrence Murray <https://www.findagrave.com/memorial/33652475/nettie-murray>
- Emelia Jones Lawrence (wife of George) <https://www.findagrave.com/memorial/106650463/emelia-lawrence>

Censuses:

1852 California State Census

E.C. Lawrence is a teamster in Stockton

https://www.ancestry.com/imageviewer/collections/1767/images/32300_224255-00855?ssrc=&usePUB=true&pld=112929

1860 Census

Ezekiel (farmer), Mary, and William are living in Elkhorn Township/Woodbridge post office

https://www.ancestry.com/imageviewer/collections/7667/images/4211323_00366?pld=2687081

1870 Census

Ezekiel (farmer worth \$8000), Mary, William, George, and Nettie are living in Elkhorn Township/Stockton post office

https://www.ancestry.com/imageviewer/collections/7163/images/4259432_00119?pld=13687424

1880 Census

Ezekiel (farmer), Mary, William, George and Nellie Lawrence are living at 115 Lockeford St in Lodi

<https://www.ancestry.com/imageviewer/collections/6742/images/4239992-00256?ssrc=&queryId=9e940143-c98d-48b1-b829-379aaf5e4e0e&usePUB=true&pId=43626714>

1900 Census

Mary Lawrence, widow, is living with George (farmer), Nettie (married), grand-daughter Marie, servant Annie Thompson, and laborer Hammerly (?) Arnold in East Lodi

https://www.ancestry.com/imageviewer/collections/7602/images/4112032_00126?ssrc=p&t&treeid=42591041&personid=19838996450&usePUB=true&pId=91062037

1910 Census

George (farmer), Emelia, M Tamada and Harry Rugh (hired men) are living at 121 E Lockeford in Lodi

https://www.ancestry.com/imageviewer/collections/7884/images/311111_4327306-00121?pId=1736688

City Directories:

Stockton City Directory 1928 – George and Emilia are living at 121 E Lockeford in Lodi

<https://www.ancestry.com/imageviewer/collections/2469/images/3655137?pId=265435498>

In the News:

Daily Evening Herald Sat, May 18, 1867 ·Page 3

Ezekiel Lawrence admitted to citizenship, affidavit of Wardrobe and Post

<https://www.newspapers.com/image/488561054/?match=1&terms=ezekiel%20lawrence%20>

Lodi News-Sentinel Sat, Jul 16, 1881 ·Page 2

Ezekiel among charter members of Lodi IOOF Lodge 259

<https://www.newspapers.com/image/1036195568/?match=1&terms=lawrence%20>

The Valley Review Sat, Jul 30, 1881 ·Page 3

E. Lawrence and T. Stoddard were in SF this week

George Lawrence leaves for St. Mary's College on Monday – his second or graduating term

Mr. Baker of San Francisco has rented the Lodi Flouring Mill

There are 2500 tons of grain stored in Lock & Lawrence's warehouse, 4/5th of which has been on storage a year

<https://www.newspapers.com/image/1140752124/?match=1&terms=lawrence%20>

Lodi News-Sentinel Sat, Aug 06, 1881 ·Page 3

Robert Barton's horse fell dead on Ezekiel Lawrence's property yesterday

<https://www.newspapers.com/image/1036195777/?match=1&terms=lawrence%20>

The Valley Review Sat, Aug 13, 1881 ·Page 3

Lawrence & Locke warehouse will loan money at 7% on grain storage

<https://www.newspapers.com/image/1140752146/?match=2>

Lodi News-Sentinel Sat, Aug 20, 1881 ·Page 3

Mr. and Mrs. E. Lawrence [and Miss Hannah Hutchins] on pleasure trip to SF and Santa Cruz

<https://www.newspapers.com/image/1036195890/?match=1&terms=lawrence%20>

The Valley Review Tue, Dec 06, 1881 ·Page 3

11 carloads of wheat shipped from Lawrence & Locke's warehouse this week

<https://www.newspapers.com/image/1140752324/?match=1&terms=lawrence%20>

Lodi News-Sentinel Sat, Dec 31, 1881 ·Page 3

E. Lawrence is charter member of Lodi Masons No. 259

<https://www.newspapers.com/image/1036196841/?match=1&terms=lawrence%20>

Lodi News-Sentinel Sat, Mar 11, 1882 ·Page 3

Debating society [Lyceum] is forming in Lodi, inc William Lawrence

<https://www.newspapers.com/image/1036197317/?match=1&terms=lawrence%20>

Lodi News-Sentinel Sat, Mar 18, 1882 ·Page 3

“Resolved that it would be for the best interests of Lodi to be incorporated”

<https://www.newspapers.com/image/1036197369/?match=1&terms=lawrence%20>

Lodi News-Sentinel Sat, Mar 18, 1882 ·Page 1

Lawrence & Locke warehouse has capacity of 4500 tons

<https://www.newspapers.com/image/1036197345/?match=1&terms=lawrence%20>

Lodi News-Sentinel Sat, Mar 25, 1882 ·Page 3

For \$5000 each E. Lawrence and C.O. Ivory are sureties for C.A. Dickerson to be a notary public in Lodi

<https://www.newspapers.com/image/1036197407/?match=1&terms=lawrence%20>

Lodi News-Sentinel Sat, Apr 01, 1882 ·Page 3

“Resolved that the building of the proposed railroad from Brack’s Landing eastward will benefit Lodi”

E. Lawrence has loaded 2 cars of wheat headed to Galveston, TX

E. Lawrence will be an election officer in the question of raising \$4000 to build a new school house

<https://www.newspapers.com/image/1036197441/?match=1&terms=lawrence%20>

Lodi News-Sentinel Sat, Apr 22, 1882 ·Page 3

To straighten the road between Lodi and Lockeford, E. Lawrence will buy a small triangle of land from Wardrobe and Pope

<https://www.newspapers.com/image/1036197564/?match=1&terms=lawrence%20>

Lodi News-Sentinel Sat, Apr 29, 1882 ·Page 3

The Lodi Lyceum is now meeting in Stoddard's Hall

<https://www.newspapers.com/image/1036197604/?match=1&terms=lawrence%20>

Lodi News-Sentinel Sat, May 13, 1882 ·Page 3

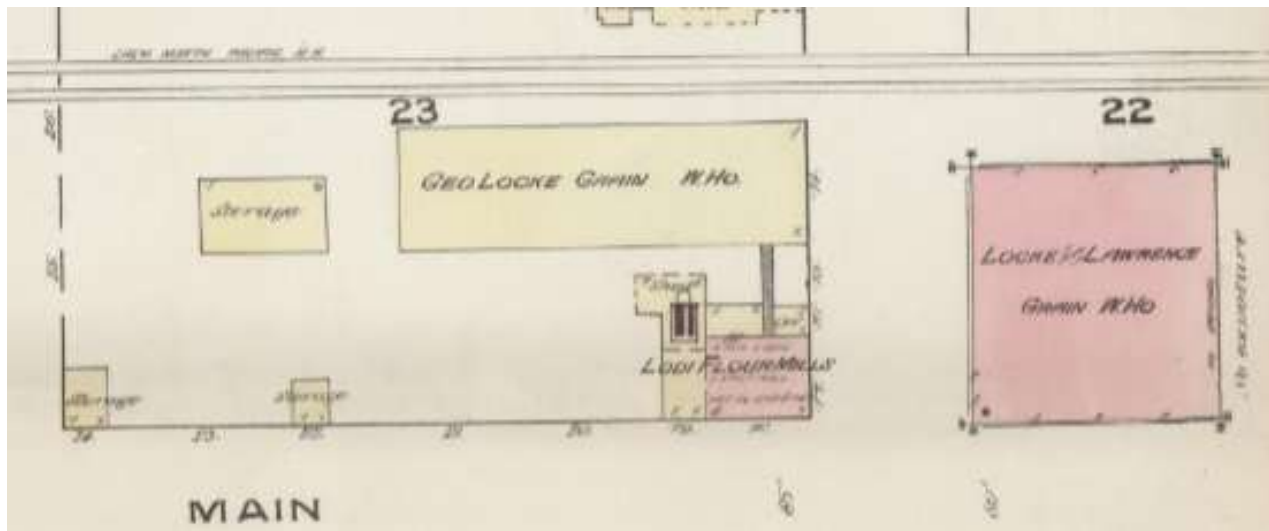
Sperry Mills has bought 300 tons of wheat "on which to start the Lodi Mills" from George Locke, M.H. Woods, and S.H. Axtell – the wheat has been in store at Locke and Lawrence's warehouse

Lodi Lyceum debates whether a man should save his mother and let his wife drown, W. H. Lawrence in the affirmative

<https://www.newspapers.com/image/1036197697/?match=1&terms=lawrence%20>

The Valley Review Tue, May 16, 1882 ·Page 5

Sperry has laid a plank road from Locke & Lawrence's warehouse, over which to truck the wheat to the mill



1884 Sanborn map

<https://www.historicalinfo.com/fimo-interpret-sanborn-maps/>

<https://www.newspapers.com/image/1140752551/?match=1&terms=lawrence%20>

Lodi News-Sentinel Sat, Jun 03, 1882 ·Page 3

Mr. and Mrs. E. Lawrence and Miss Hannah Hutchins [and William Lawrence] were in San Francisco to attend the commencement exercises at St. Mary's where George Lawrence graduated yesterday with honors

<https://www.newspapers.com/image/1036197844/?match=2&terms=lawrence%20>

Lodi News-Sentinel Sat, Jun 10, 1882 ·Page 3

W.H. Lawrence is delegate at Democratic primary

<https://www.newspapers.com/image/1036197891/?match=1&terms=lawrence%20>

The Valley Review Tue, Jun 13, 1882 ·Page 5

E. Lawrence is on the executive committee that's bringing the narrow-gauge San Joaquin and Sierra Nevada railroad to Lodi

E. Lawrence is also on the committee that's planning the grand reception when the railroad reaches Lodi

<https://www.newspapers.com/image/1140752623/?match=1&terms=lawrence%20>

Lodi News-Sentinel Sat, Jun 24, 1882 ·Page 2

Frustration that the new school house isn't built due to insufficient funding – E. Lawrence with David Kettleman, Marion Green, John Hutchins, E.R. Pease, and R.C. Sargent will sign a note to make it happen

<https://www.newspapers.com/image/1036197978/?match=1&terms=lawrence%20>

Lodi News-Sentinel Sat, Jul 01, 1882 ·Page 3

E. Lawrence and R.L. Wardrobe have put in cement sidewalks around their fine residences

<https://www.newspapers.com/image/1036198039/?match=1&terms=lawrence%20>

Lodi News-Sentinel Sat, Jul 08, 1882 ·Page 3

The narrow-gauge now runs to Lockeford -- a side-track will be put in at Lodi running to Locke & Lawrence's warehouse and Sperry's Mills

<https://www.newspapers.com/image/1036198081/?match=1&terms=lawrence%20>

Lodi News-Sentinel Sat, Aug 05, 1882 ·Page 3

An unattended team of horses runs away from Locke & Lawrence's warehouse past the Mill down Main St – when an old man attempted to stop the panicked horses they veered toward the William Brooks house where children were sitting on the porch – one child knocked unconscious but soon recovered, one valuable mare broke its neck

<https://www.newspapers.com/image/1036198288/?match=1&terms=lawrence%20>

Lodi News-Sentinel Sat, Aug 19, 1882 ·Page 3

L.O. Gillespie is shipping 2,000 sacks of grain by narrow gauge to Locke & Lawrence's warehouse

Mr. and Mrs. E. Lawrence and daughter Miss Nettie, accompanied by Miss Nellie Hutchins, are in Monterey

<https://www.newspapers.com/image/1036198379/?match=1&terms=lawrence%20>

Lodi News-Sentinel Sat, Aug 26, 1882 ·Page 3

W.H. Lawrence will be the narrow-gauge agent for the company and Lawrence & Locke's warehouse will be used temporarily as a depot

<https://www.newspapers.com/image/1036198426/?match=1&terms=lawrence%20>

The Valley Review Wed, Sep 20, 1882 ·Page 5

Young Men's Democratic Club organized last night at Stoddard's Hall; William Lawrence elected President and George Lawrence Cor. Secretary

The SJ&SNN Railroad is building a long switch down Main St past Lawrence's warehouse and the Lodi Flouring Mills extending to within about half a block of the C.P. [Central Pacific] Freight Depot

<https://www.newspapers.com/image/1140753044/?match=2&terms=lawrence%20>

Lodi News-Sentinel Sat, Sep 30, 1882 ·Page 3

The SJ&SN Railroad Depot will be built on one of Mrs. McKinney's lots, nearly opposite the residence of E. Lawrence

<https://www.newspapers.com/image/1036198637/?match=1&terms=lawrence%20>

The Valley Review Wed, Oct 11, 1882 ·Page 5

George Locke has begun a suit in Supreme Court against the Lodi Mill and Warehouse Company to foreclose a mortgage on the property for \$10,000 plus 1.25% interest since Oct 11, 1876. The Company consists of E. Lawrence, C.O. Ivory, Mathew Farley, I.N. Stretch, and M.E. Bryant.

<https://www.newspapers.com/image/1140753172/?match=1&terms=lawrence%20>

The Valley Review Wed, Oct 11, 1882 ·Page 4

William Lawrence is running as Democrat for County Surveyor

<https://www.newspapers.com/image/1140753168/?match=1&terms=lawrence%20>

Lodi News-Sentinel Sat, Nov 18, 1882 ·Page 3

Real estate transfer – C. Wilkins to E. Lawrence and Geo. Locke – land 83x54 feet in Lodi, \$125

<https://www.newspapers.com/image/1036198920/?match=1&terms=lawrence%20>

Lodi News-Sentinel Sat, Dec 09, 1882 ·Page 3

Bulldog vs. racoon fight in E. Lawrence's field – result of pitched battle was a draw

<https://www.newspapers.com/image/1036199050/?match=1&terms=lawrence%20>

Lodi News-Sentinel Sat, Dec 30, 1882 ·Page 1

Year in Review: On April 10 Sperry & Co commenced repairs on Lodi Flour Mills... Fire in the residence of E. Lawrence, narrow escape from total destruction

<https://www.newspapers.com/image/1036199166/?match=1&terms=lawrence%20>

Lodi News-Sentinel Sat, Mar 03, 1883 ·Page 3

Over 1000 tons of wheat shipped this week via Central Pacific from Locke & Lawrence's warehouse to Port Costa. The wheat was purchased from I.N. Stretch, E. Lawrence, Mrs. E.M. Kearney, R. Pixley, Geo Hogan, S. Ferdun, and C.P. Allison.

<https://www.newspapers.com/image/1036199595/?match=1&terms=lawrence%20>

The Valley Review Wed, Aug 15, 1883 ·Page 5

The streets around Sperry's warehouse, the Sierra Nevada Flour Mill, and Locke and Lawrence's warehouse are crowded all day with wagons loaded with wheat waiting their turn to unload

<https://www.newspapers.com/image/1140754474/?match=3&terms=lawrence%20>

The Valley Review Wed, Mar 12, 1884 ·Page 5

Catharine Hutchins, mother of Mrs. Mary Hutchins Lawrence (Ezekiel's wife), has died and bequeathed to Mary and sons James and John Hutchins \$1 each. Much land is left to son Henry Hutchins and more to 40yo daughter Miss Hannah Hutchins.

<https://www.newspapers.com/image/1140755334/?match=1&terms=lawrence%20>

The Valley Review Wed, May 14, 1884 ·Page 5

E. Lawrence is going for two months to Canada and the States

<https://www.newspapers.com/image/1140755568/?match=1&terms=lawrence%20>

Lodi News-Sentinel Sat, Aug 30, 1884 ·Page 3

George Lawrence is President of local Native Sons of the Golden West [The Native Sons began as an organization "embracing only the sons of those sturdy pioneers who arrived on this coast prior to the admission of California as a state."]

<https://www.newspapers.com/image/1036200643/?match=1&terms=lawrence%20>

Lodi News-Sentinel Sat, Sep 13, 1884 ·Page 3

George Lawrence has been appointed Lodi deputy to receive and register voting transfers

<https://www.newspapers.com/image/1036200727/?match=1&terms=lawrence%20>

Lodi News-Sentinel Sat, Sep 27, 1884 ·Page 3

George Lawrence is Director and Leader of the Grand Western Cornet Band of Lodi

<https://www.newspapers.com/image/1036200825/?match=1&terms=lawrence%20>

Lodi News-Sentinel Sat, Oct 11, 1884 ·Page 3

George Lawrence, who is clean and well-educated, is running for Justice of the Peace

<https://www.newspapers.com/image/1036200920/?match=1&terms=lawrence%20>

Lodi News-Sentinel Sat, Nov 15, 1884 ·Page 3

Newly elected congressman Louttit is in Lodi, misses his train, says “If I have to remain away from home overnight, I would rather stay in Lodi than any other place on earth.”
Justice-elect George Lawrence is among his hosts at the Sargent House.

<https://www.newspapers.com/image/1036201174/?match=1&terms=lawrence>

Lodi News-Sentinel Sat, Dec 27, 1884 ·Page 2

E. Lawrence officer – Lodi Demands Incorporation (proposition to incorporate Lodi)

<https://www.newspapers.com/image/1036201454/?match=1&terms=lawrence>

Lodi News-Sentinel Sat, Mar 07, 1885 ·Page 3

E. Lawrence catches “a citizen” stealing a sack of barley

<https://www.newspapers.com/image/1036201971/?match=1&terms=lawrence>

Lodi News-Sentinel Sat, May 30, 1885 ·Page 3

William Lawrence is one of the 4th of July barbecue organizers

Billy (William Lawrence) tips the scales at 200 pounds

<https://www.newspapers.com/image/1036202581/?match=1&terms=lawrence>

Lodi News-Sentinel Sat, Jun 27, 1885 ·Page 3

G.E. Lawrence is donating \$5 in cash and \$10 in books toward the free reading room that will keep youth off the streets

The instrument duet of Miss Lizzie Gober (piano) and Judge Lawrence (cornet) was a gem

<https://www.newspapers.com/image/1036202821/?match=1&terms=lawrence>

Lodi News-Sentinel Sat, Jul 17, 1886 ·Page 2

E. Lawrence, Manager of the G.C.B.A., has marked down all the fabrics and clothing in order to close out the immense stock of goods

<https://www.newspapers.com/image/1036202987/?match=1&terms=lawrence>

Lodi News-Sentinel Sat, Jul 24, 1886 ·Page 3

E. Lawrence's and J. Hutchins's 75 horse-power "Atlas" engine and boiler arrived Thursday by train. It will power a centrifugal pump near the Mokelumne River [where the old saw mill stood] in a grand irrigation project that will require only 2.75 minutes to flood an acre one inch deep. They have invested \$6000 and will sell the water to other residents.

<https://www.newspapers.com/image/1036203055/?match=1&terms=lawrence>

Lodi News-Sentinel Sat, Aug 07, 1886 ·Page 3

The irrigation water will be conveyed in a ditch 10 feet wide and 3 feet deep on the natural grade of the land

<https://www.newspapers.com/image/1036203177/?match=2&terms=lawrence>

Lodi News-Sentinel Sat, Aug 14, 1886 ·Page 3

Don't forget to register to vote. Justice Lawrence is the register deputy. Over 3,000 names have already been put on the new Great Register.

Grapes vs wheat – E. Lawrence says his vineyard near Lodi flourishes without irrigation and pays him at the rate of \$100 per acre yearly

<https://www.newspapers.com/image/1036203232/?match=1&terms=lawrence>

Lodi News-Sentinel Sat, Sep 11, 1886 ·Page 3

E. Lawrence of the G.C.B.A. has received the plant for the new automatic light and is having it set up at the Granger's store

<https://www.newspapers.com/image/1036203465/?match=1&terms=lawrence>

Lodi News-Sentinel Sat, Nov 06, 1886 ·Page 2

Patronize Home Trade! Buy at the Granger's store

<https://www.newspapers.com/image/1036203921/?match=1&terms=lawrence>

Lodi News-Sentinel Sat, Dec 04, 1886 ·Page 3

R.L. Graham, Pete Botzback, G.E. Lawrence, and H.L. Clark are going to Roberts Island to hunt geese and tule hogs

<https://www.newspapers.com/image/1036204151/?match=1&terms=lawrence>

Lodi News-Sentinel Sat, Dec 18, 1886 ·Page 3

The irrigation pump on the bank of the river just above the Cherokee Lane bridge, was tested and found satisfactory today, so ditches and canals will be dug

<https://www.newspapers.com/image/1036204252/?match=1&terms=lawrence>

Lodi News-Sentinel Sat, Mar 19, 1887 ·Page 3

E. Lawrence is setting out 20 acres of almond trees on his property on the outskirts of Lodi

<https://www.newspapers.com/image/1036204879/?match=2&terms=lawrence>

Lodi News-Sentinel Sat, Apr 16, 1887 ·Page 3

E. Lawrence and others will now be able to beautify the Southern/Central Pacific railroad land west of the tracks between Elm and Walnut, except for 209 feet south of Pine St [where the depot was]

<https://www.newspapers.com/image/1036205063/?match=1&terms=lawrence>

Lodi News-Sentinel Sat, Apr 30, 1887 ·Page 3

Runaway horses at the Lawrence & Hutchins ditch

<https://www.newspapers.com/image/1036205170/?match=1&terms=lawrence>

Lodi News-Sentinel Sat, May 07, 1887 ·Page 3

Last Monday George Lawrence was admitted to the bar, having passed a successful examination before the Supreme Court in Sacramento

<https://www.newspapers.com/image/1036205233/?match=1&terms=lawrence>

Lodi News-Sentinel Sat, May 14, 1887 ·Page 3

Lawrence and Hutchins irrigation ditch is nearly complete

<https://www.newspapers.com/image/1036205297/?match=1&terms=lawrence>

Lodi News-Sentinel Sat, Jun 04, 1887 ·Page 3

Nearly three miles of ditches twelve feet wide have been constructed through to John Hutchins's ranch

<https://www.newspapers.com/image/1036205463/?match=1&terms=lawrence>

The Valley Review Thu, Oct 25, 1888 ·Page 2

New sub-divisions in West Lodi will have water guaranteed from the Lawrence and Hutchins's ditch

<https://www.newspapers.com/image/1141004035/?match=1&terms=lawrence>

The Valley Review Thu, Apr 25, 1889 ·Page 5

Will Lawrence [known as "Jumbo"] has 7 acres of strawberries. On Monday pickers gathered 135 boxes.

Surprise party for E. Lawrence and wife

<https://www.newspapers.com/image/1141004479/?match=1&terms=lawrence>

The Valley Review Thu, Jun 27, 1889 ·Page 5

George E. Lawrence, a prominent lawyer in Visalia, will spend a few days here as guest of his parents, Mr. and Mrs. E. Lawrence

<https://www.newspapers.com/image/1141004715/?match=3&terms=lawrence>

The Valley Review Thu, Jun 27, 1889 ·Page 4

The new Olivewood Addition, bordered by Lockeford Road, Cherokee Lane, Hale Ave, and Pope Ave, will have water guaranteed by the Lawrence & Hutchins Ditch. Five-minute walk to S.P. Depot. Lots for sale by S.A. Kitchener and George F. Cluff.

<https://www.newspapers.com/image/1141004709/?match=1&terms=lawrence>

The Valley Review Thu, Jul 04, 1889 ·Page 5

E. Lawrence has placed in the hands of George Cluff 160 acres of his Lodi land for actual settlers

<https://www.newspapers.com/image/1141004739/?match=3&terms=lawrence>

The Valley Review Thu, Aug 29, 1889 ·Page 3

The Lawrence & Hutchins steam pump will be shut down as soon as all that alfalfa is watered

<https://www.newspapers.com/image/1141004874/?match=1&terms=lawrence>

The Valley Review Thu, Oct 17, 1889 ·Page 3

Obit for William H. Lawrence, 31yo, died Oct 14 1889

George Cluff has sunk a well on his land, erecting an engine and pump that will supply at least a quarter-section of land if properly handled

<https://www.newspapers.com/image/1141004971/?article=cfa0042b-f30c-48b9-89e1-9073a5e63049&terms=lawrence>

The Valley Review Thu, Feb 27, 1890 ·Page 3

Real estate transfer – The Woman's Land Syndicate and E. Lawrence to E. Melone, lots 6 and 7, blk 4, Woman's Syndicate Addition to Lodi \$5

<https://www.newspapers.com/image/1141005298/?match=1&terms=lawrence>

The Valley Review Thu, Apr 03, 1890 ·Page 3

E. Lawrence is having his house thoroughly renovated and papered. The walls show artistic neatness.

<https://www.newspapers.com/image/1141005363/?match=1&terms=lawrence>

The Valley Review Thu, Sep 03, 1891 ·Page 3

Mr. Lawrence has about 40 acres in almonds

<https://www.newspapers.com/image/1141006318/?match=1&terms=lawrence>

The Valley Review Thu, Nov 24, 1892 ·Page 6

"Campers" [Roma people/gypsies] frightened Dr. Armstrong's spirited team who ran, then turned suddenly striking the narrow bridge lengthwise that covers the Lawrence & Hutchins ditch at the corner of Pine St and Cherokee Lane

<https://www.newspapers.com/image/1141007000/?match=1&terms=lawrence>

The Valley Review Thu, Apr 13, 1893 ·Page 5

The Hutchins-Lawrence ditch is now a thing of the past, at least that part which passed through the Wardrobe tract on Cherokee Lane, for this week it was ploughed in

<https://www.newspapers.com/image/1141007151/?match=1&terms=lawrence>

The Valley Review Thu, Jun 08, 1893 ·Page 7

Miss Maria Lawrence of Lodi weds Robert E. Murray, Colonel and Adjutant-General on the Governor's staff. They will reside in Sacramento.

<https://www.newspapers.com/image/1141007217/?article=82c53b4b-d6d5-4c74-a8fe-6896f216117e&terms=lawrence>

Lodi News-Sentinel Tue, Sep 10, 1901 ·Page 1

George Lawrence has a force of six girls and women at work who pick the almonds from the hulls after they have gone through the steam huller

<https://www.newspapers.com/image/1036197010/?match=1&terms=lawrence>

Lodi News-Sentinel Tue, Aug 12, 1902 ·Page 3

G.E. Lawrence will be a delegate to the Democrat convention

<https://www.newspapers.com/image/1036199575/?match=1&terms=lawrence>

Lodi News-Sentinel Tue, Sep 23, 1902 ·Page 3

Robert Murray, husband of Mrs. Nettie Lawrence Murray, died Monday morning in San Francisco

<https://www.newspapers.com/image/1036199955/?match=1&terms=lawrence>

Lodi News-Sentinel Sat, Aug 15, 1903 ·Page 1

G.E. Lawrence has purchased a new steam-engine almond huller that will employ one man and five girls, who will accomplish the work of two men and fifteen girls. Almond hulls will be used for fuel.

<https://www.newspapers.com/image/1036202857/?match=1&terms=lawrence>

Lodi News-Sentinel Tue, Aug 25, 1903 ·Page 1

G.E. Lawrence active in organizing grape growers

<https://www.newspapers.com/image/1036203021/?match=1&terms=lawrence>

Lodi News-Sentinel Thu, Nov 05, 1903 ·Page 3

Geo. Lawrence's stereopticon used at entertainment

<https://www.newspapers.com/image/1036204232/?match=1&terms=lawrence>

Lodi News-Sentinel Tue, Oct 11, 1904 ·Page 4

George E. Lawrence is running for State Senator [loses]

<https://www.newspapers.com/image/1036200557/?match=1&terms=lawrence>

Lodi News-Sentinel Sat, Aug 05, 1905 ·Page 1

G.E. Lawrence vineyard is healthy, about 43 years old, produces 10.5 tons per acre

<https://www.newspapers.com/image/1036202311/?match=1&terms=lawrence>

Lodi News-Sentinel Thu, Sep 07, 1905 ·Page 1

Laura DeForce Gordon and George Lawrence speak at meeting about where the new streetcar line should be laid in Lodi

<https://www.newspapers.com/image/1036203013/?match=1&terms=lawrence>

Lodi News-Sentinel Thu, Jan 11, 1906 ·Page 2

G.E. Lawrence a director of the Lodi Board of Trade

<https://www.newspapers.com/image/1036205559/?match=1&terms=lawrence>

Lodi News-Sentinel Thu, Mar 08, 1906 ·Page 1

Lawrence land discussed in relation to proposed Lodi boundaries if incorporated

<https://www.newspapers.com/image/1036207082/?match=1&terms=lawrence>

Lodi News-Sentinel Thu, Apr 26, 1906 ·Page 2

New residence for Mr. and Mrs. Geo. E. Lawrence is nearly complete. Eight room cottage near the orange grove.

https://www.newspapers.com/image/1036208288/?match=1&clipping_id=new

Lodi News-Sentinel Thu, Apr 26, 1906 ·Page 3

Following the San Francisco earthquake, Mrs. Jones, mother of Mrs. Geo. E. Lawrence, arrived in Lodi and is the guest of her daughter. Mrs. Jones owns seven dwellings in SF in addition to a large family residence. Her dwellings escaped serious damage.

<https://www.newspapers.com/image/1036208298/?match=1&terms=lawrence>

Lodi News-Sentinel Sat, May 05, 1906 ·Page 1

USDA Viticulture Experimental Plot in Lodi is doing well under the care of superintendent George Lawrence

<https://www.newspapers.com/image/1036208321/?match=1&terms=lawrence>

Lodi News-Sentinel Sat, Jun 02, 1906 ·Page 1

Rebecca, the pretty young domestic in the Lawrence home, was pursued with shots fired by an admirer

<https://www.newspapers.com/image/1036209027/?match=1&terms=lawrence>

Lodi News-Sentinel Tue, Sep 11, 1906 ·Page 1

George Lawrence is in favor of incorporation, will gladly place a fair share of his farm within corporate limits

<https://www.newspapers.com/image/1036211419/?match=1&terms=lawrence>

Lodi News-Sentinel Thu, Nov 29, 1906 ·Page 1

Lodi incorporates, George Lawrence is one of the top vote-getters for Board of Trustees

<https://www.newspapers.com/image/1036214837/?match=1&terms=lawrence>

Lodi News-Sentinel Thu, Dec 13, 1906 ·Page 1

The trustees are called “City Dads,” George E. Lawrence is unanimously elected Chairman

<https://www.newspapers.com/image/1036215570/?match=1&terms=lawrence>

Lodi News-Sentinel Thu, Jan 17, 1907 ·Page 1

Trustees wrestle with whether to license wine manufacturers

<https://www.newspapers.com/image/1036065860/?match=1&terms=lawrence>

Lodi News-Sentinel Tue, Jan 22, 1907 ·Page 1

More questions over liquor licenses: Japanese residents say they aren’t operating saloons, they just entertain at all hours

<https://www.newspapers.com/image/1036065913/?match=2&terms=lawrence>

Lodi News-Sentinel Tue, Jan 22, 1907 ·Page 3

The sister of Mrs. George Lawrence (George’s sister-in-law) has designed the official seal of the City of Lodi

<https://www.newspapers.com/image/1036065922/?match=1&terms=lawrence>

Lodi News-Sentinel Tue, Feb 12, 1907 ·Page 1

Geo. Lawrence speaks with the Women’s Improvement Club members about the proposed library, says he can’t say whether the City can give money but libraries are “artistic” so fundraising is the Ladies’ job anyway

<https://www.newspapers.com/image/1036066177/?match=1&terms=lawrence>

Lodi News-Sentinel Tue, Apr 02, 1907 ·Page 1

Temperance crowds petition trustees to close Lodi's saloons

<https://www.newspapers.com/image/1036066830/?match=1&terms=lawrence>

Lodi News-Sentinel Tue, Oct 08, 1907 ·Page 1

For the first time in 30 years, Lodi's saloons start closing on Sundays. George Lawrence warns saloon owners that if they try to defy the law to provoke a test lawsuit, the City will immediately draw up an ordinance to close the saloons altogether.

<https://www.newspapers.com/image/1036068101/?match=1&terms=lawrence>

Lodi News-Sentinel Tue, Oct 08, 1907 ·Page 5

Chairman Lawrence proposes that the Lodi Arch have lighting installed. The switch would be at the depot and the arch lights turned on only for special occasions.

<https://www.newspapers.com/image/1036068119/?match=1&terms=lawrence>

Lodi News-Sentinel Tue, Mar 03, 1908 ·Page 1

Chairman Lawrence reports that local Japanese wish to form an association for the purpose of co-operating with the Lodi City Board in enforcing any regulations the Board might pass. The matter was favorably considered.

<https://www.newspapers.com/image/1036068234/?match=1&terms=lawrence>

Lodi News-Sentinel Tue, Mar 10, 1908 ·Page 1

Much debate over proposed sewerage and water plans, including threat of C.L. Van Buskirk that he would move away if the bonds don't pass

<https://www.newspapers.com/image/1036068305/?match=2&terms=lawrence>

Lodi News-Sentinel Thu, Mar 12, 1908 ·Page 4

Engineer says that the best place for a water and power plant is on the Lawrence property, by George Lawrence refuses on the grounds of conflict of interest.

<https://www.newspapers.com/image/1036068337/?match=1&terms=lawrence>

Lodi News-Sentinel Sat, Mar 14, 1908 ·Page 1

George Lawrence and many others support the opening of a cannery in Lodi

<https://www.newspapers.com/image/1036068352/?match=1&terms=lawrence>

Lodi News-Sentinel Thu, Mar 19, 1908 ·Page 3

George Lawrence gives a much-appreciated cornet solo at the Catholic Concert

<https://www.newspapers.com/image/1036068399/?match=1&terms=lawrence>

Lodi News-Sentinel Tue, Apr 14, 1908 ·Page 1

The current Board is re-elected, this time with F.O. Hale getting 315 votes, 1 more than Villinger and 4 more than Lawrence

<https://www.newspapers.com/image/1036068615/?match=1&terms=lawrence>

Lodi News-Sentinel Thu, Apr 23, 1908 ·Page 1

Lawrence is the unanimous choice for Chair

<https://www.newspapers.com/image/1036068671/?match=1&terms=lawrence>

Lodi News-Sentinel Tue, Jul 07, 1908 ·Page 3

Lawrence, George Shima, and others welcome Japanese consul to Lodi

<https://www.newspapers.com/image/1036146956/?match=1&terms=lawrence>

Lodi News-Sentinel Sat, Jul 25, 1908 ·Page 3

Lawrence represents Lodi at the Grape Growers' Association in San Francisco

<https://www.newspapers.com/image/1036147770/?match=1&terms=lawrence>

Lodi News-Sentinel Thu, Jun 10, 1909 ·Page 1

The San Joaquin Table Grape Growers' Association will start building the 40x50-foot addition to the Lawrence packing shed immediately

<https://www.newspapers.com/image/1036151231/?match=1&terms=lawrence>

Lodi News-Sentinel Sat, Sep 11, 1909 ·Page 1

Lawrence represents Lodi at the League of Municipalities in Santa Cruz

<https://www.newspapers.com/image/1036155960/?match=1&terms=lawrence>

Lodi News-Sentinel Sat, Oct 23, 1909 ·Page 2

Mary Hutchins Lawrence dies, funeral at St. Ann's Church

<https://www.newspapers.com/image/1036159292/?article=9067036b-8061-429e-816f-592ee7f9c83b&terms=lawrence>

Lodi News-Sentinel Thu, Feb 10, 1910 ·Page 6

Lodi's Carnegie Library to open; George Lawrence to speak at the occasion

<https://www.newspapers.com/image/1036167024/?match=1&terms=lawrence>

Lodi News-Sentinel Thu, Feb 17, 1910 ·Page 1

City buys water and light plants (and the land they're built on) from Cary brothers for \$35,000

<https://www.newspapers.com/image/1036167416/?match=1&terms=lawrence>

Lodi News-Sentinel Sat, Feb 19, 1910 ·Page 1

Bids for sewer system solicited; some property owners will need to deed land to City to participate. The Gordon and Brier land may be treated separately.

<https://www.newspapers.com/image/1036167566/?match=1&terms=lawrence>

Lodi News-Sentinel Sat, Feb 26, 1910 ·Page 1

Building permit granted to Lawrence for an automobile house on his Lockeford Street property

<https://www.newspapers.com/image/1036167983/?match=1&terms=lawrence>

Lodi News-Sentinel Tue, Apr 05, 1910 ·Page 1

Professional burglars steal the East Side Market safe and take it to the Lawrence almond orchard to explode it

<https://www.newspapers.com/image/1036170632/?match=1&terms=lawrence>

Lodi News-Sentinel Thu, Apr 21, 1910 ·Page 6

Lawrence is re-elected and again unanimously chosen President of the Board

<https://www.newspapers.com/image/1036171824/?match=1&terms=lawrence>

Lodi News-Sentinel Thu, May 05, 1910 ·Page 1

H.H. Henderson is chosen to construct sewer, water and light in Lodi

<https://www.newspapers.com/image/1036172679/?match=1&terms=lawrence>

Lodi News-Sentinel Thu, Jun 16, 1910 ·Page 8

George Lawrence buys new Mitchell car

<https://www.newspapers.com/image/1036175538/?match=1&terms=lawrence>

Lodi News-Sentinel Sat, Jun 25, 1910 ·Page 1

Several acres of the Lawrence property north of Lodi burned yesterday after a passing train threw sparks onto the dry grass

<https://www.newspapers.com/image/1036175994/?match=1&terms=lawrence>

Lodi News-Sentinel Thu, Jun 30, 1910 ·Page 4

George Lawrence, Chair of Lodi's Board of Trustees, makes speech describing the three ages of Lodi: wheat, watermelon, grapes

<https://www.newspapers.com/image/1036176331/?match=1&terms=lawrence>

Lodi News-Sentinel Thu, Feb 23, 1911 ·Page 1

Lodi baseball team will give a fundraiser to fit up a new ball park, building a grandstand, and purchasing new uniforms. An ideal site for the ball grounds has been secured from George Lawrence near the old creamery on Lockeford Road [he gives use of the land -- he doesn't actually deed the land away]. The park will be enclosed with a fence.

<https://www.newspapers.com/image/1036255127/?match=1&terms=lawrence>

Lodi News-Sentinel Sat, Feb 25, 1911 ·Page 8

The Outlaws (baseball team) will continue giving entertainments to raise funds for the fence, grandstand, and uniforms. George Lawrence has donated the land.

<https://www.newspapers.com/image/1036255393/?match=1&terms=lawrence>

Lodi News-Sentinel Sat, Mar 25, 1911 ·Page 1

The Lodi Outlaws and Stockton Athletics will play an exhibition game on the new diamond on the Lawrence tract

<https://www.newspapers.com/image/1036256995/?match=1&terms=lawrence>

Lodi News-Sentinel Thu, Apr 06, 1911 ·Page 10

The new ball park will be called the Paraiso ball park, since George Lawrence calls his vineyard the Paraiso vineyard, a Seasons ticket costs \$10 and can be bought at the Friedberger store.

<https://www.newspapers.com/image/1036257822/?match=1&terms=lawrence>

Lodi News-Sentinel Sat, Apr 08, 1911 ·Page 8

Mayor Lawrence will throw the first pitch at tomorrow's season opener between the Lodi Outlaws and the Sacramento Cascades. The grandstand [paid for by Joe Frienderger and Ed Wilkinson Sr.] has been completed and can seat at least 1200 people.

<https://www.newspapers.com/image/1036257945/?match=1&terms=lawrence>

Lodi News-Sentinel Tue, Apr 11, 1911 ·Page 8

Outlaws win 4-2. The wind blew sand into the players' eyes and caused unnecessary errors.

<https://www.newspapers.com/image/1036258070/?match=1&terms=lawrence>

Lodi News-Sentinel Sat, May 20, 1911 ·Page 3

The possibility of creating a union high school is discussed, with Mayor Lawrence presiding

<https://www.newspapers.com/image/1036260420/?match=1&terms=lawrence>

Lodi News-Sentinel Sat, Jun 10, 1911 ·Page 2

A new addition connects the Mason Bros fruit shed with the large brick building purchased last year from George Lawrence

<https://www.newspapers.com/image/1036261808/?match=1&terms=lawrence>

Lodi News-Sentinel Thu, Jul 13, 1911 ·Page 3

Mayor Lawrence announces that street paving will begin soon

<https://www.newspapers.com/image/1036264103/?match=1&terms=lawrence>

Lodi News-Sentinel Tue, Aug 15, 1911 ·Page 1

George Lawrence and others push for Cherokee Lane to become part of the new state highway

<https://www.newspapers.com/image/1036266439/?match=1&terms=lawrence>

Lodi News-Sentinel Thu, Aug 24, 1911 ·Page 1

Henderson reported to be too free in spending City money. Three trustees say he's buying expensive, useless blacksmithing tools. Mayor Lawrence advises that the Board not stop Henderson just as the City's pumping plant is almost complete.

<https://www.newspapers.com/image/1036267114/?match=1&terms=lawrence>

Lodi News-Sentinel Thu, Oct 19, 1911 ·Page 5

Mayor Lawrence opened the Catholic Fair last night

<https://www.newspapers.com/image/1036270977/?match=1&terms=lawrence>

Lodi News-Sentinel Thu, Oct 26, 1911 ·Page 5

Henderson has been arrested for disturbing the peace of City Superintendent John Henning

<https://www.newspapers.com/image/1036271340/?match=1&terms=lawrence>

Lodi News-Sentinel Sat, Nov 04, 1911 ·Page 1

Lodi's volunteer fire department is in disarray, confused about what it can submit for reimbursement, and feeling defensive. Mayor Lawrence facilitates, tells paid fire chief Welch that any reasonable expenses (including hiring someone to properly store the hose after a fire) will be reimbursed.

<https://www.newspapers.com/image/1036271845/?match=1&terms=lawrence>

Lodi News-Sentinel Thu, Nov 30, 1911 ·Page 2

Petition for newspaper deliverers to be able to ride their bikes on sidewalks – Lawrence to review with City Attorney

<https://www.newspapers.com/image/1036273364/?match=1&terms=lawrence>

Lodi News-Sentinel Tue, Dec 12, 1911 ·Page 1

"Heavy tax payers" such as C.L. Van Buskirk (assessed \$84,020) and George Lawrence (assessed \$10,910) say the high school bonds must be approved. Lawrence: "We simply have to have the high school." Includes drawing of proposed Lodi High School plan.

<https://www.newspapers.com/image/1036274112/?match=1&terms=lawrence>

Lodi News-Sentinel Tue, Dec 19, 1911 ·Page 10

Mayor Lawrence asks for additional street lighting to be installed

<https://www.newspapers.com/image/1036274863/?match=1&terms=lawrence>

Lodi News-Sentinel Thu, Jan 18, 1912 ·Page 1

George Lawrence is one of several offering land for the new high school, saying that he contemplated dividing the property into city lots anyway

<https://www.newspapers.com/image/1036276380/?match=1&terms=lawrence>

Lodi News-Sentinel Sat, Mar 16, 1912 ·Page 7

George Lawrence will travel to the Panama Canal with other members of California Chambers of Commerce

<https://www.newspapers.com/image/1036280337/?match=1&terms=lawrence>

Lodi News-Sentinel Tue, Apr 16, 1912 ·Page 1

Lawrence is again re-elected and again unanimously chosen as president of the Board

<https://www.newspapers.com/image/1036282405/?match=1&terms=lawrence>

Lodi News-Sentinel Tue, Jul 02, 1912 ·Page 3

Japanese Association says that George Lawrence is a strong supporter

<https://www.newspapers.com/image/1036288150/?match=1&terms=lawrence>

Lodi News-Sentinel Tue, Jul 09, 1912 ·Page 1

Board petitioned to stop immoral « rag » dancing. “Too often are young lives ruined because a weak will falls for the suggestive measures of the modern two-step.” Chairman Lawrence says that “there are different forms of ‘ragging,’ some of them graceful and pretty, while others are disgusting a disgraceful.” State law prohibits immoral exhibitions of any kind, and any ordinance we would draw must not conflict with state law.

<https://www.newspapers.com/image/1036288551/?match=1&terms=lawrence>

Lodi News-Sentinel Thu, Jul 25, 1912 ·Page 3

A street sign should be installed at the corner of Sacramento and Lodi saying which street is which. Residents are constantly being bothered at all hours of the day and night by people asking. President Lawrence will write to the California Auto association.

<https://www.newspapers.com/image/1036289610/?match=1&terms=lawrence>

Lodi News-Sentinel Sat, Sep 14, 1912 ·Page 1

At the Lodi Opera House, George Lawrence speaks to the Lodi Japanese Association on the occasion of the death of the Japanese emperor

<https://www.newspapers.com/image/1036292645/?match=1&terms=lawrence>

Lodi News-Sentinel Sat, Nov 02, 1912 ·Page 4

Four last glass windows were broken in Mayor Lawrence’s home by Halloween jokers

<https://www.newspapers.com/image/1036295724/?match=1&terms=lawrence>

Lodi News-Sentinel Tue, Nov 05, 1912 ·Page 1

George Lawrence defends himself against accusations that he is “for” roadhouses – he is for the grape industry, not roadhouses. Lawrence says that during Lodi’s early years of wheat growing there was much public drunkenness and horseracing in front of its 14 saloons. Today public sentiment has closed most of the saloons with no need for legislation.

<https://www.newspapers.com/image/1036295838/?match=1&terms=lawrence>

Lodi News-Sentinel Tue, Nov 05, 1912 ·Page 2

George Lawrence is said to employ Hindus over Americans in his vineyard.

<https://www.newspapers.com/image/1036295852/?match=1&terms=lawrence>

Lodi News-Sentinel Tue, Dec 10, 1912 ·Page 1

Plan for a Greater Lodi: instead of having a small city area, all additions will be pulled into the City and the blocks renumbered from 1 to 100. George Lawrence is having 8 blocks surveyed for City blocks.

<https://www.newspapers.com/image/1036297883/?match=1&terms=lawrence>

Lodi News-Sentinel Sat, Jan 11, 1913 ·Page 1

Map of Fire Districts showing the Lawrence Addition

<https://www.newspapers.com/image/1036236161/?match=1&terms=lawrence>

Lodi News-Sentinel Tue, Feb 04, 1913 ·Page 8

Sewer extension coming to the proposed alley in the rear of the old Lawrence (Ezekiel’s?) home

<https://www.newspapers.com/image/1036237449/?match=1&terms=lawrence>

Lodi News-Sentinel Tue, Mar 04, 1913 ·Page 2

Government maintains a 10-acre experimental vineyard on the Lawrence tract

<https://www.newspapers.com/image/1036238894/?match=1&terms=lawrence>

Lodi News-Sentinel Tue, May 13, 1913 ·Page 1

East Pine Street residents want the City to pay for paving their streets; Mayor Lawrence says that wouldn't be fair to the West side residents who were subject to assessments

<https://www.newspapers.com/image/1036243940/?match=1&terms=lawrence>

Lodi News-Sentinel Tue, Jun 03, 1913 ·Page 4

George Lawrence entertains high-ranking Japanese officials at the Moquelumne Club

<https://www.newspapers.com/image/1036245107/?match=1&terms=lawrence>

Lodi News-Sentinel Sat, Jul 12, 1913 ·Page 1

George Lawrence will represent San Joaquin County grape growers in Washington DC, where he will protest the new tax on alcohol used in fortifying sweet wines

<https://www.newspapers.com/image/1036246995/?match=1&terms=lawrence>

Lodi News-Sentinel Sat, Sep 06, 1913 ·Page 3

George Lawrence elected VP of the California Almond Growers

<https://www.newspapers.com/image/1036250732/?match=1&terms=lawrence>

Lodi News-Sentinel Tue, Sep 16, 1913 ·Page 8

In Washington DC the tax on sweet wines is voted down

<https://www.newspapers.com/image/1036251509/?match=1&terms=lawrence>

Lodi News-Sentinel Sat, Nov 22, 1913 ·Page 1

Lodi's Water and Light Plants show a profit of \$1000 per month; City's fiscal year ends in the black

<https://www.newspapers.com/image/1036257015/?match=1&terms=lawrence>

Lodi News-Sentinel Tue, Dec 16, 1913 ·Page 1

Paraiso Park will be turned over to potatoes; George Lawrence says that since the new Union High School will maintain first-class athletic grounds he will take back use of his land. Joe Friendberger, who paid for the grandstand, will sell the lumber.

<https://www.newspapers.com/image/1036258539/?match=1&terms=lawrence>

Lodi News-Sentinel Thu, Jan 08, 1914 ·Page 1

George and Emilia Lawrence and Nettie M. Murray form a corporation, the Lawrence Holding Company

<https://www.newspapers.com/image/1036197962/?match=1&terms=lawrence>

Lodi News-Sentinel Sat, Jan 17, 1914 ·Page 3

George, Emilia, and Nettie deed 166 acres to the Lawrence Holding Company

<https://www.newspapers.com/image/1036198343/?match=1&terms=lawrence>

Lodi News-Sentinel Thu, Jan 22, 1914 ·Page 8

George Lawrence will not run again for Trustee

<https://www.newspapers.com/image/1036198560/?match=1&terms=lawrence>

Lodi News-Sentinel Thu, Apr 02, 1914 ·Page 1

“Wet” and “Dry” forces fight; Lawrence pleads the case for grape growers

<https://www.newspapers.com/image/1036200880/?match=1&terms=lawrence>

Lodi News-Sentinel Tue, Apr 07, 1914 ·Page 4

Lawrence makes the business case for grapes leading to Lodi's prosperity

<https://www.newspapers.com/image/1036201161/?match=1&terms=lawrence>

Lodi News-Sentinel Thu, Apr 16, 1914 ·Page 1

“Wet” wins, but Lodi’s temperance workers are more determined than ever

<https://www.newspapers.com/image/1036201615/?match=1&terms=lawrence>

Lodi News-Sentinel Thu, Apr 30, 1914 ·Page 2

Tribute to retiring Trustees Lawrence and Blodgett. Lawrence is “distinguished for clearness of vision, dignity of character and evenness of mind, and transmitted to his successor the insignia of office untarnished by a single stain.”

<https://www.newspapers.com/image/1036202205/?match=1&terms=lawrence>

Lodi News-Sentinel Tue, Jun 09, 1914 ·Page 4

George Lawrence hosts merry party on his boat, *The Lawrence*.

<https://www.newspapers.com/image/1036204093/?match=1&terms=lawrence>

Lodi News-Sentinel Tue, Nov 10, 1914 ·Page 1

So far, California « Wets » win: 377,491 to 330,874

<https://www.newspapers.com/image/1036202522/?match=1&terms=prohibition>

Lodi News-Sentinel Tue, Dec 08, 1914 ·Page 3

524,681 votes against Prohibition, 355,536 in favor

<https://www.newspapers.com/image/1036204014/?match=1&terms=prohibition>

Lodi News-Sentinel Tue, Jan 19, 1915 ·Page 1

In San Francisco, G.E. Lawrence elected president of the California Grape Protective Association

<https://www.newspapers.com/image/1036206223/?match=1&terms=lawrence>

Lodi News-Sentinel Sat, Feb 27, 1915 ·Page 3

George Lawrence buys 18hp Holt Caterpillar for \$50,000 at the Panama-Pacific Exposition

<https://www.newspapers.com/image/1036207971/?match=1&terms=lawrence>

Lodi News-Sentinel Sat, Apr 03, 1915 ·Page 3

Al G. Barnes Circus tents will be set up on the Lawrence property

<https://www.newspapers.com/image/1036209553/?match=1&terms=lawrence>

Lodi News-Sentinel Tue, Jun 15, 1915 ·Page 4

At the RL Graham drug store George Lawrence is displaying his small branch with 23 good-sized lemons on it

<https://www.newspapers.com/image/1036214182/?match=1&terms=lawrence>

Lodi News-Sentinel Thu, Mar 23, 1916 ·Page 10

New "Lawrence Park" being made ready for locals. Joe Friedberger, chief of the old Outlaw team, will lead the Friedberger-ing Broncos. Backstops, parking places for automobiles, players' benches, and all necessary equipment has been arranged for.

<https://www.newspapers.com/image/1036207136/?match=1&terms=lawrence>

Lodi News-Sentinel Sat, Apr 01, 1916 ·Page 1

The Broncos will start from the Arch at 2pm and march with the Tokay band to Lawrence Park

<https://www.newspapers.com/image/1036182722/?match=1&terms=lawrence>

Lodi News-Sentinel Tue, Apr 04, 1916 ·Page 4

Nearly 1,000 people came to see the Lodi Broncos win against the Lathrop Nine 5-3. Bleachers will be coming soon.

<https://www.newspapers.com/image/1036182944/?match=1&terms=lawrence>

Lodi News-Sentinel Thu, Apr 13, 1916 ·Page 1

Copper is stolen from the engine in George Lawrence's pumping plant

<https://www.newspapers.com/image/1036183419/?match=1&terms=lawrence>

Lodi News-Sentinel Tue, Apr 18, 1916 ·Page 10

A record crowd sat in the new bleachers at Lawrence Park. Of note were the high number of female fannettes. The Friedberger-ing Broncos beat the Tracy Railroaders 9-3.

<https://www.newspapers.com/image/1036183795/?match=1&terms=lawrence>

Lodi News-Sentinel Thu, Apr 20, 1916 ·Page 1

George Lawrence bids to have the Municipal Baths built on his land, but the Church of God site wins out. The Mason Cold Storage Company will give the baths free use of the warm discharge water from its plant. There is a flow of 110 gallons of water per minute which goes from the condenser to the sewer. The tank will be 100x40 feet and hold 200,000 gallons of water. One citizen objects, saying that unimproved property closer to the gas well could be bought for a great deal less.

<https://www.newspapers.com/image/1036183806/?match=1&terms=lawrence>

Lodi News-Sentinel Tue, Jul 11, 1916 ·Page 1

George Lawrence will handle the waste water flowing from the Municipal Baths. The tank will be emptied by pumping the water through a pipe to run north on Cherokee Street [now Washington] a distance of about 3000 feet to a low place on the Lawrence property.

<https://www.newspapers.com/image/1036188115/?match=1&terms=lawrence>

Lodi News-Sentinel Thu, Sep 26, 1918 ·Page 5

George Lawrence will assist army draft registrants in answering their questionnaires at no charge

<https://www.newspapers.com/image/1036249811/?match=1&terms=lawrence>

Lodi News-Sentinel Thu, Jan 22, 1920 ·Page 1

Geroge Lawrence's house is burglarized

<https://www.newspapers.com/image/1036121702/?match=1&terms=lawrence>

Lodi News-Sentinel Sat, Feb 07, 1920 ·Page 1

Geroge Lawrence is angry that a neighbor cut down his elm tree that was planted by Ezekiel

<https://www.newspapers.com/image/1036122983/?match=1&terms=lawrence>

Lodi News-Sentinel Tue, May 11, 1920 ·Page 5

The National Fruit Product Company has commenced construction of its plant in the Lawrence tract

<https://www.newspapers.com/image/1036131842/?match=1&terms=lawrence>

Lodi News-Sentinel Sat, Nov 06, 1920 ·Page 1

Cy Moreing (brother of Susie Moreing Burr) won the contract to grade and gravel the George Lawrence Road

<https://www.newspapers.com/image/1036182329/?match=1&terms=lawrence>

Lodi News-Sentinel Sat, Nov 20, 1920 ·Page 1

The new National Fruit Products plant on the Lawrence tract has 47,000 square feet and modern equipment that can crush 500 tons of grapes per day

<https://www.newspapers.com/image/1036183756/?match=1&terms=lawrence>

Lodi News-Sentinel Tue, Feb 02, 1926 ·Page 1

George Lawrence offers to deed 8.5 acres north of East Lockeford St for a city park if the City will improve the park and pave certain streets

<https://www.newspapers.com/image/1036115157/?match=1&terms=%22lawrence%20park%22>

The Record Fri, Feb 05, 1926 ·Page 20

The City of Lodi thinks it will not itself be able to pay \$6000 to pave over 1.5 blocks of East Lockeford St in front of the Lawrence property. But if the “district plan” is used, the City would pave the majority of the two blocks of East Lockeford between Main and Washington. [“district plan” is not explained] The park lies just east of Washington St and would necessitate paving along its south front. The Southern pacific Railroad Company owns the south side of East Lockeford in that area and would be a party to such a paving scheme.

<https://www.newspapers.com/image/843283649/?match=1&terms=%22lawrence%20park%22>

Lodi News-Sentinel Sat, Feb 20, 1926 ·Page 3

American Legion members offer to “doll up” the new park

<https://www.newspapers.com/image/1036116336/?match=1&terms=%22lawrence%20park%22>

Lodi News-Sentinel Sat, Mar 06, 1926 ·Page 2

The Lodi baseball team will seek the backing of the Lodi Business Men’s Association in their goal of joining the Central California baseball league. The greatest expense will be in preparing a suitable grounds in the Lawrence Park tract.

<https://www.newspapers.com/image/1036116943/?match=1&terms=%22lawrence%20park%22>

The Record Fri, Mar 12, 1926 ·Page 6

Lauren Wilkinson, who ran the Lodi club in the old Central League, has taken over the management of the Tokays again this year for the Central California circuit. Since the Lodi Merchants Association will not contribute financially, Wilkinson has secured private backing.

<https://www.newspapers.com/image/843265313/?match=1&terms=%22lawrence%20park%22>

Stockton Independent Sat, Mar 20, 1926 ·Page 5

Work is progressing rapidly at the Lawrence field ball park. Volunteers are erecting bleachers to seat 150 and twelve local 'business men are donating uniforms. The first practice game will be against Galt on March 27.

<https://www.newspapers.com/image/608139011/?match=1&terms=%22lawrence%20park%22>

Lodi News-Sentinel Sat, Apr 03, 1926 ·Page 10

Besides the Merchants Association team, Lodi's Battery F (Army California/National Guard) is playing at Lawrence Park.

<https://www.newspapers.com/image/1036117973/?match=2&terms=%22lawrence%20park%22>

Stockton Independent Fri, Apr 09, 1926 ·Page 5

The Lodi Merchants are all set for their season opener against the Escalon Giants next Sunday. The park is finished and fenced. The backstop [behind home plate] has been built. The bleachers can hold 300 fans. There is parking for 160 machines [automobiles] and park is surrounded by Tokay grapevines.

<https://www.newspapers.com/image/608141365/?match=1&terms=%22lawrence%20park%22>

The Record Fri, Apr 09, 1926 ·Page 12

Contract is approved to accept the 8.5 acres in exchange for paving of all parts of Lockeford and Washington Streets fronting on lots 3 and 6, and parts of 2 and 5, of the Lawrence tract. Mr. Lawrence objected to the clause allowing anyone or any organization to charge admission to games in the park, so it was rewritten that such charges would only cover expenses and be deposited into a maintenance fund. Mr. Lawrence also insisted upon a reversion clause providing that if the park is not always used for park purposes, it shall revert back to the Lawrence heirs. This was also accepted.

<https://www.newspapers.com/image/843274010/?match=1&terms=%22lawrence%20park%22>

Lodi News-Sentinel Thu, Apr 13, 1933 ·Page 1

American Legion will host annual Easter Egg Hunt in Lawrence Park

<https://www.newspapers.com/image/1036344133/?match=1&terms=lawrence>

Lodi News-Sentinel Tue, Jun 13, 1933 ·Page 6

Tennis courts at Lawrence Park are reopened after resurfacing

<https://www.newspapers.com/image/1036346279/?match=1&terms=lawrence>

Lodi News-Sentinel Thu, Dec 14, 1933 ·Page 1

George Lawrence obituary

<https://www.newspapers.com/image/1036352036/?match=1&terms=lawrence>

Seen today:

Lawrence Elementary School

<https://www.cde.ca.gov/SchoolDirectory/details?cdscode=39685856042147>